

## Axial- and Radial Tool Heads

Complete part machining on CNC lathes and machining centers



The top quality range of tool heads manufactured with the highest precision, for your complete machining projects.



### Technical features:

- Compact design of tool heads
- High rigidity and roundness precision
- High metal-removal rate
- Long service life thanks to precision mounting
- Maintenance-free operation thanks to permanent lubrication with grease filling
- All parts subject to wear case-hardened
- All tools with external coolant supply
- More flexible opportunities for operation
- Reduction of time for manufacturing, setting-up, and transport
- Added bonus of reduced ancillary costs
- Attractively-priced standard model

## Special designs



Radial tool head with collet reception



Axial tool head with prismatic guide



Axial screw driving machine HSK A63



Angular tool head for hydraulic expansion chuck



Milling tool head with rotatable millingshaft fork



Angular tool head with collet reception



Radial tool head with small angular adjustment



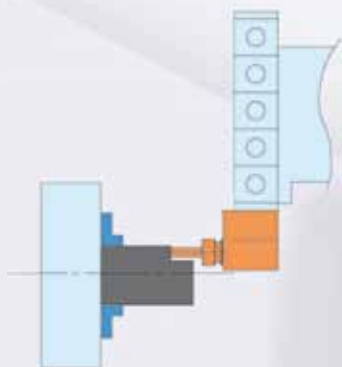
Milling unit with adjustable front head

# Turret specifications and drive clutches

## Tool star for turrets

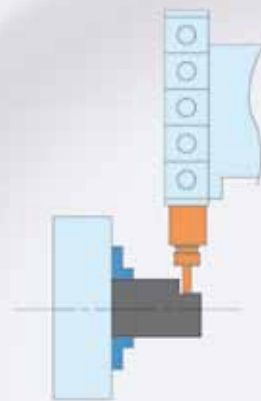
### Axial

Angled tool heads for axial machining



### Radial

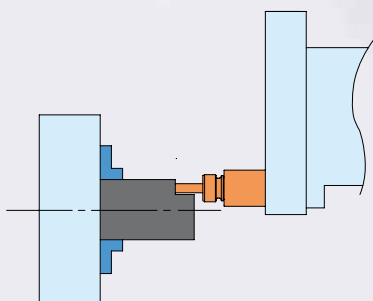
Straight tool heads for radial machining



## Tool disk for turrets

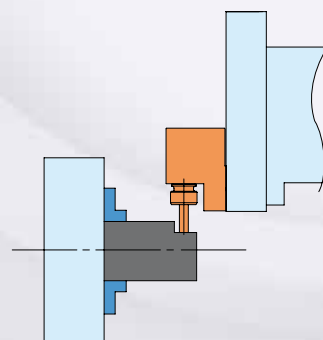
### Axial

Straight tool heads for axial machining

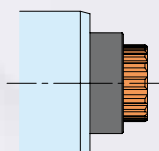


### Radial

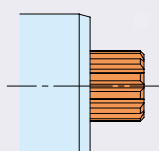
Angled tool heads for radial machining



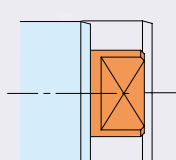
## Drive couplings for different tool turrets



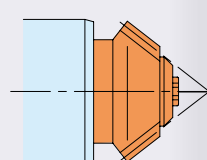
Teeth arrangement as per DIN 5480, with spindle torsion securing



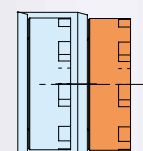
Teeth arrangement as per DIN 5482



Key surface to DIN 1809



Bevel-wheel drive



Spur coupling