

# CLEANROOM MATERIALS AT RÖHM

## ALUMINUM ALLOYS

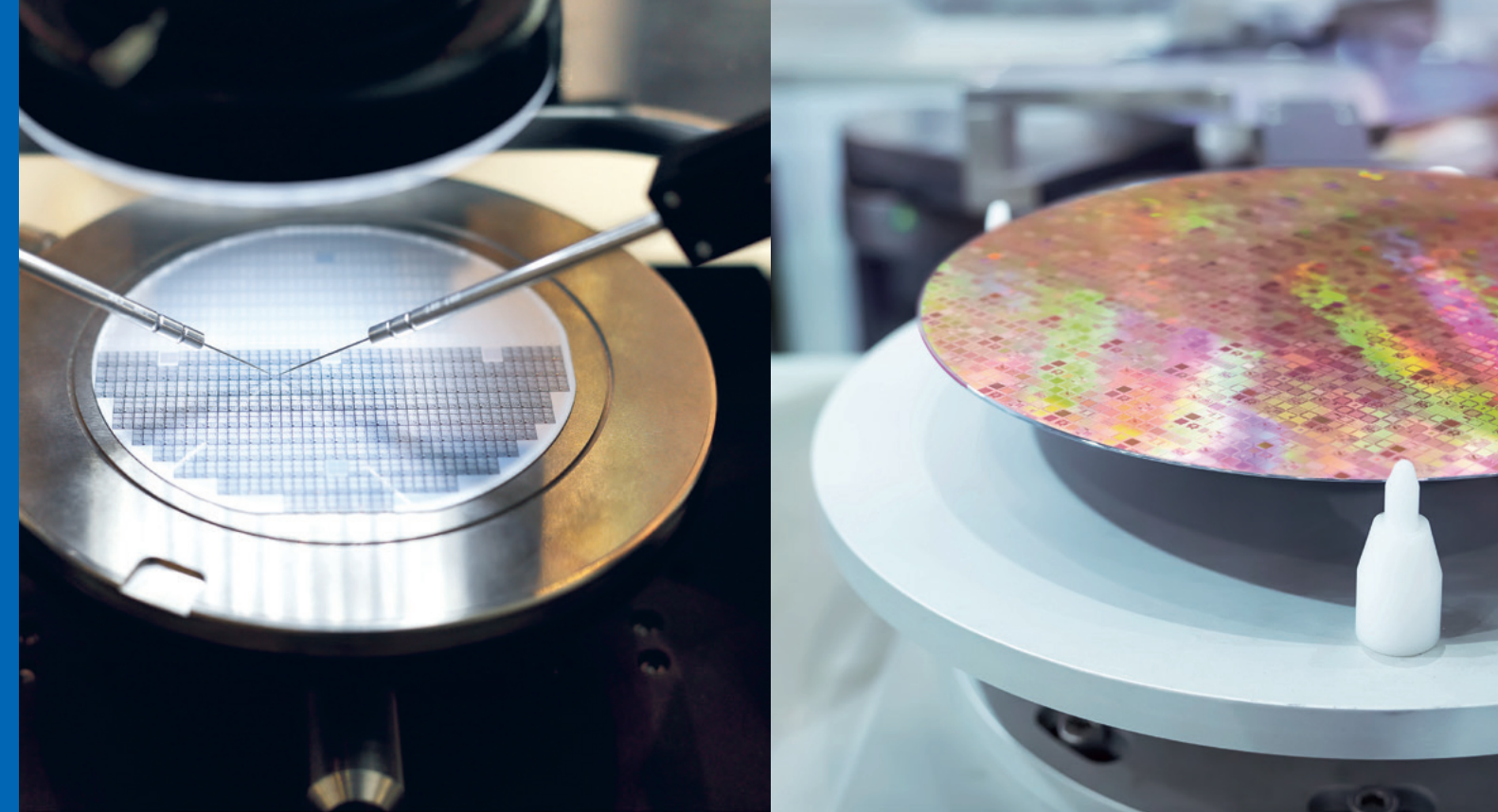
- 7175
- AA5083

## STAINLESS STEELS

- 430F
- 316L
- UNS S32205 / F51,F60
- 17-4 PH
- 304
- 316Ti
- 440B
- 309ss / Alloy218

## SPECIAL PLASTIC

- Iglidur J and C
- Polyamide
- PBI
- PEEK
- POM
- PTFE, Teflon



DE | EN | US

## PURE PRECISION

# ENGINEERING AND PRODUCTION OF CLEANROOM PRODUCTS

Individual handling technology, components  
and assemblies for cleanroom technology

### INDIVIDUAL COMPONENTS OR ENTIRE ASSEMBLIES – ALL CLEANROOM-COMPATIBLE

- Swivel units
- Upgrade devices
- Retrofit devices
- Add-on modules
- Carrier frames
- Handling devices
- Handling frames
- Transport carts
- Transport devices
- Buffer storage inserts
- Absorber plates
- Sealing plugs
- Clamping heads
- Holding fixtures (chucks)
- Support pins (pins)
- Mechanical assemblies

More at:

[www.roehm.biz/en/cleanroom](http://www.roehm.biz/en/cleanroom)



**RÖHM**

RÖHM GmbH Heinrich-Roehm-Straße 50 • 89567 Sontheim/Brenz • Germany  
TEL +49 7325 16 0 • [info@roehm.biz](mailto:info@roehm.biz) • [roehm.biz](http://roehm.biz)

Subject to changes.  
ID no. 1395.135 / 0823

**RÖHM**

# ENGINEERING AND PRODUCTION OF CLEANROOM PRODUCTS FROM THE SPECIALIST FOR INDIVIDUAL HANDLING TECHNOLOGY

RÖHM has been producing clamping, gripping and handling technology for more than 110 years. Many large machine and plant manufacturers worldwide list us as a standard supplier for drill and lathe chucks, centers, robot gripping technology or clamping systems. Together with the companies it supplies,

RÖHM has now entered the cleanroom.

Our products are known for their exceptional combination of robustness, precision and intelligent force and motion control. This is particularly in demand in the cleanroom. This experience now also benefits your cleanroom products.

Take advantage of our know-how for cleanroom clamping, gripping and handling technology. RÖHM develops and produces components and assemblies for your production process.

# CLEANROOM-COMPATIBLE: THE PRODUCT DEVELOPMENT

Everything starts with individual product development, which considers the requirements of the cleanroom in addition to the solution of the actual task. It depends on three components: selection of materials, product design and manufacturing process.

Either RÖHM works according to your specifications – or our developers create the product themselves under framework conditions that are agreed with you beforehand. RÖHM knows what is important in the individual industries.



# OWN MANUFACTURING: UP TO CLASS 7

RÖHM produces cleanroom-compatible clamping, gripping and handling technology with maximum vertical integration. Final production and packaging also take place in our own cleanroom tent up to cleanroom class EN ISO 7. This even includes the installation of larger assemblies.

If cleanroom-compatible products in a higher class are required, certified suppliers take over the final cleaning and packaging. Plans are currently underway for a permanent cleanroom building.

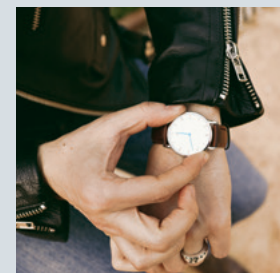


# EXPERIENCE WITH DIFFERENT INDUSTRIES



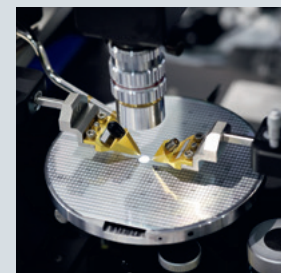
## OPTICS

Clamping for finishing and installation of precision optical assemblies



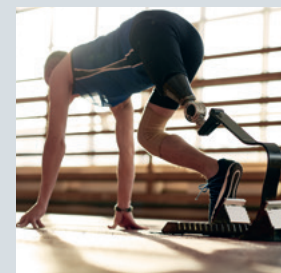
## PRECISION MECHANICS

Clamping and gripping tools for mechanical machining of housings for high-quality watches



## SEMICONDUCTOR MANUFACTURING

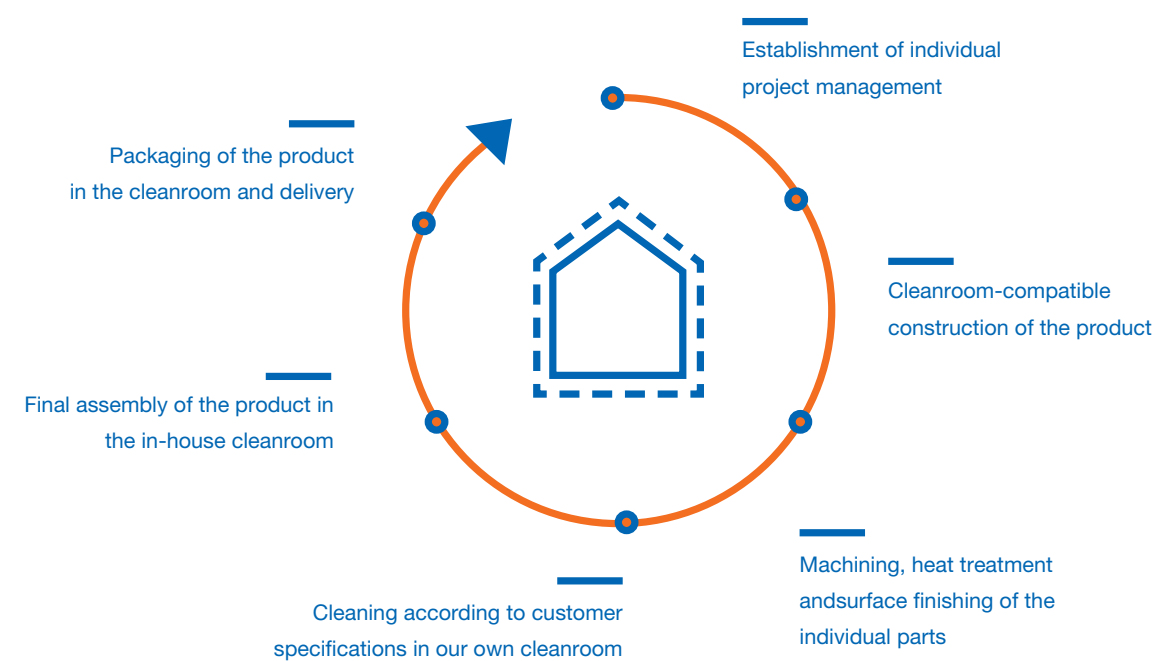
Mechanical assemblies for plant and process solutions



## MEDICAL TECHNOLOGY

Clamping tools for finishing of implants

# CLEANROOM COMPATIBLE: THE ENTIRE PROCESS



# THE CLEANROOM TENT FROM RÖHM

<b>Planning and equipment</b>	MCRT, Heuchelheim
<b>Cleanroom class</b>	ISO 7
<b>Maximum manageable component volume</b>	approx. 2 m <sup>3</sup>
<b>Maximum manageable component mass</b>	1,000 kg
<b>Upstream cleanroom</b>	with material and personnel lock, with cleaning baths for incoming and outgoing objects
<b>Other features</b>	ESD protection floor, dark room with particle measuring technology

